



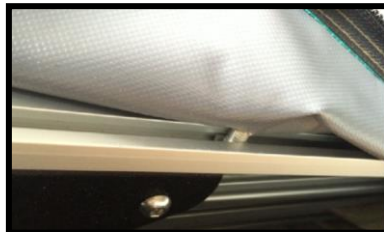
## 30 SECOND WING AWNING FITTING INSTRUCTIONS

1. Unpack awning and Remove fitting kit from awning bag.



- 4 x Tie down pegs
- 4 x M8x25mm s/s bolts
- 4 x M8x55mm s/s bolts
- 4 x M8 nylon nuts
- 4 x Guy rope
- 2 x Steel mounting plate with two holes
- 2 x Mounting L bracket x 2
- Buckle strap for rear bar x1

2. Mark the canvas at the back position on the frame grooves; make two holes with a sharp object for the 8 mm bolt to go through. Slide in two M8 square nuts and fit the track onto frame.



3. Position the bolts at the points needed then attach the two L bracket using the nylon nuts supplied. The first L bracket needs to be as close as possible to the pivoting point – (not more than 300mm from the rear of awning). The front-end L bracket **must not exceed 700mm** from the front of the awning.

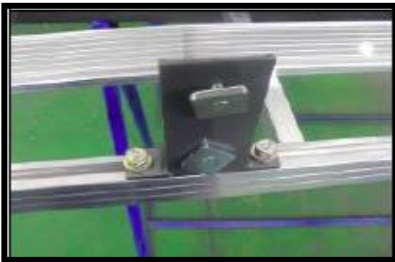


4. Optional bracket mounting.

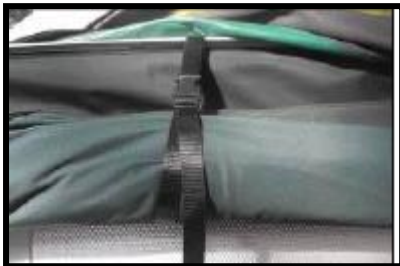
Optional bracket can be purchased as an extra component to fit on canopy or roof bracket



Secure both fitting brackets only tightening the rear bracket as far back as possible, leaving the front bracket loose.



5. Open the 30 Second Wing Awning using the side release velcro strap and tighten the rear strap.



6. Secure awning with the 4 tie down pegs and guy ropes in breezy conditions.



**\*Note 1: WHEN USING THE AWNING IN RAIN, THE TIE DOWN CLIPS ON THE AWNING NEED TO USED WITH THE ROPES PROVIDED TO ENSURE THERE IS NO POOLING OF WATER ON THE AWNING. THIS WILL ENSURE THE WATER RUNS OFF THE AWNING AND DOES NOT LEAK THROUGH IT.**

**\*Note 2: WHEN OPENING AND CLOSING THE AWNING THE TIE STRAP HOOK MUST BE UNHOOKED**

The 30 Second Wing Awning is designed to be a free-standing to aid in set up and pack down only. The awning has a large surface area which, with a sudden gust, could cause damage. The awning is designed as a shade protector for use during general camping conditions .

We highly recommend that it is pegged down at all times and ensure all guy ropes are anchored correctly. This may need to be re-adjusted constantly depending on your conditions. **Do not** erect during windy conditions. Any damage caused from wind and /or adverse weather will not be covered under warranty.

Our products are made to the highest quality, although should you have any issues with the workmanship of one of our items please contact us via email [sales@au4x4.com.au](mailto:sales@au4x4.com.au)

#### **EXCLUSIONS**

The warranty is limited to manufacturing and materials defects. Not including damage caused by adverse weather, wind, misuse or abuse, wear and tear, incorrect installation or set up and/or incorrect application.

#### **CONSUMER RIGHTS**

Our goods come with guarantees that cannot be excluded under Australian law. You are entitled to a replacement or refund for a major failure and for compensation for any other reasonably foreseeable loss or damage. You are also entitled to have goods repaired or replaced if the goods fail to be of acceptable quality and failure does not amount to a major failure.

#### **TO MAKE A CLAIM**

To make a claim in relation to the above manufacturers warranty please ensure you retain your sales receipt of purchase. Please contact [sales@au4x4.com.au](mailto:sales@au4x4.com.au). All freight costs associated with return of product for assessment is payable by purchaser.